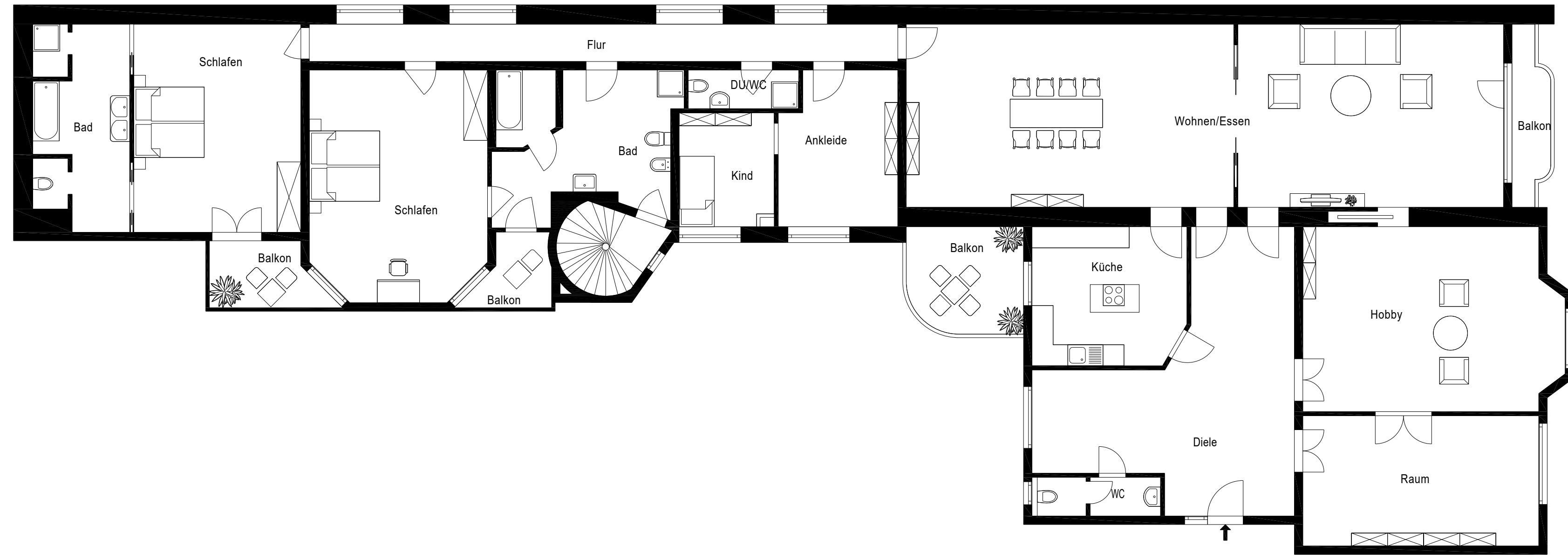


42.55
 55 7.61 24 16.71 24 9.30 12 7.55 24

6.70
 55
 5.91
 24



55
 5.51
 24
 5.25
 12
 3.70
 24
 15.61

55 7.61 24 5.06 24 4.96 24 2.70 12 3.40 24 3.33 24 1.54 12 2.00 12 3.69 24 6.70 24
 43.55