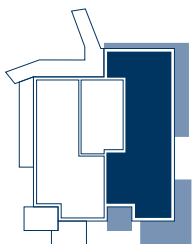
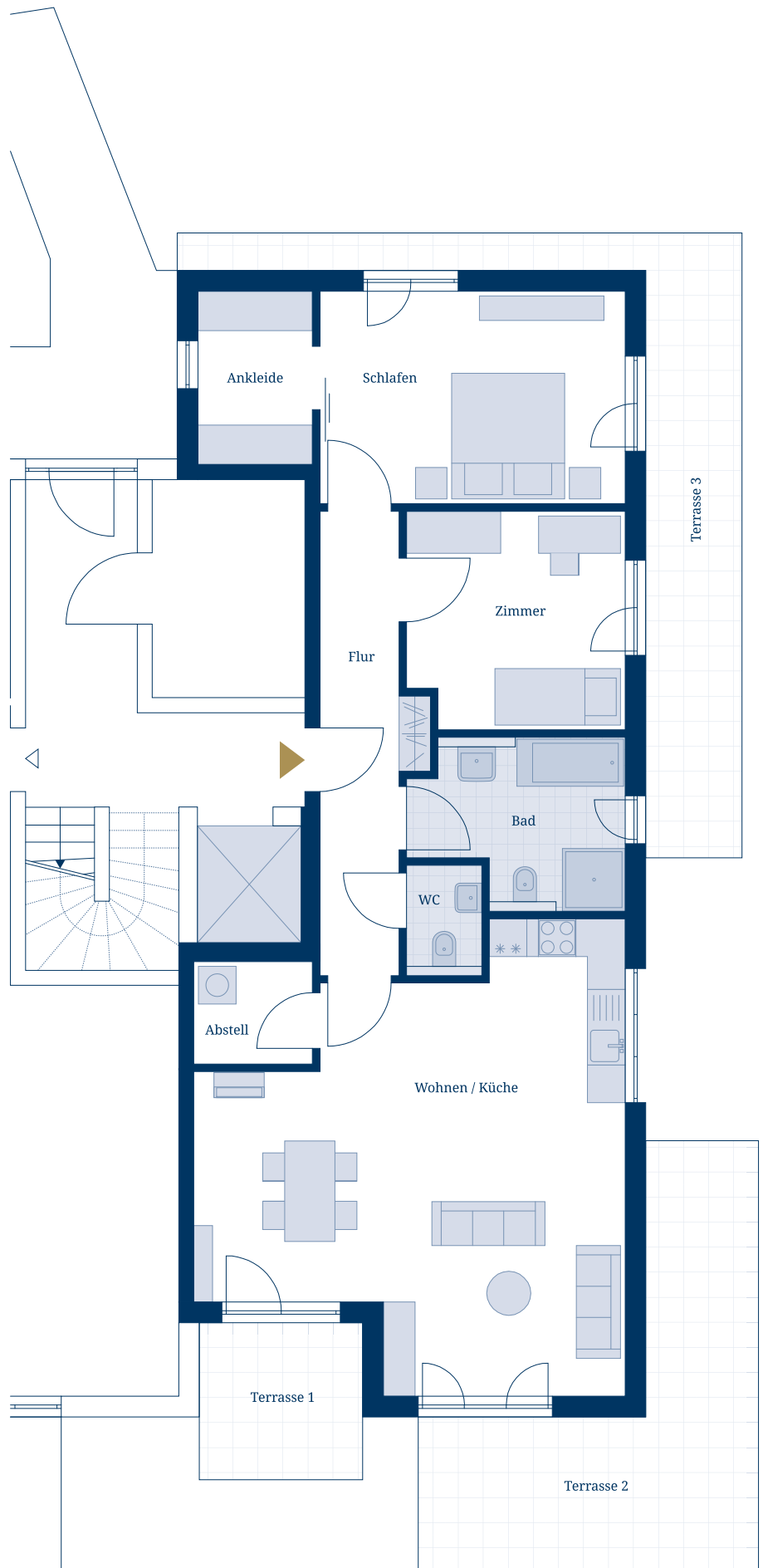


W19 HAUS B - WE 07

EG rechts
3-Zimmer-Wohnung | ca. 120,45m²

Wohnen / Küche	40,05m ²
Zimmer	11,78m ²
Schlafen	16,45m ²
Ankleide	5,04m ²
Bad	8,19m ²
WC	2,11m ²
Abstell	3,08m ²
Flur	9,92m ²
Terrasse 1 (50%)	3,25m ²
Terrasse 2 (50%)	10,71m ²
Terrasse 3 (50%)	9,87m ²

GESAMTFLÄCHE ca. 120,45m²



M 1:100